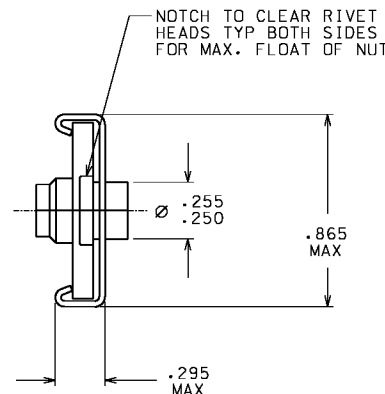
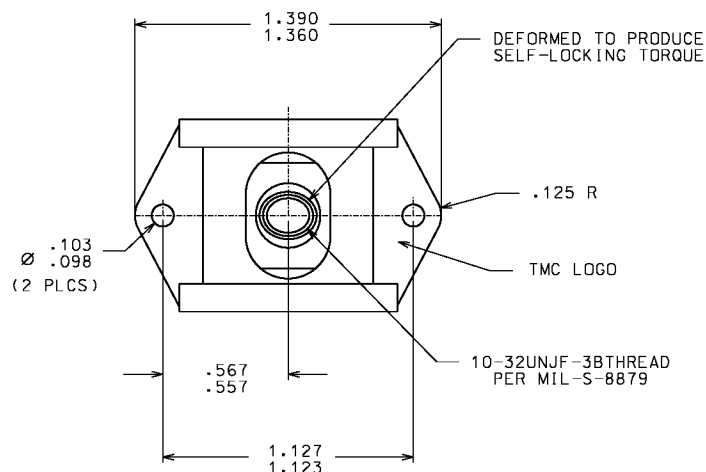


187012-3-()



NOTES:

- MATERIAL:
NUT: 4130 OR 8740 ALLOY STEEL
SPRING, CHANNEL AND RECEPTACLE: 17-7PH STAINLESS STEEL
- FINISH: NUT: CADMIUM PLATED PER AMS-QQ-P-416, TYPE II, CL 2
SPRING, CHANNEL AND RECEPTACLE: PASSIVATED
- LUBRICATION: DRY FILM LUBE PER AS5272
- PERFORMANCE: NASM25027, EXCEPT TORQUE-OUT NOT REQUIRED AND AXIAL TENSILE STRENGTH 700 LBS MIN
- SPRING LOAD SHALL BE 25 ± 3 LBS WHEN THE NUT ELEMENT SHANK PROTRUDES FROM THE BEARING SURFACE OF THE RECEPTACLE A DISTANCE EQUAL TO THE NOMINAL STRUCTURE THICKNESS. ADDITIONAL PROTRUSION OF $.013 \pm .007$ WILL CAUSE THE NUT ELEMENT FLANGE TO BOTTOM OUT.
- FLOATABILITY: .150 MINIMUM RADIAL
- PART CALLOUT EXP:

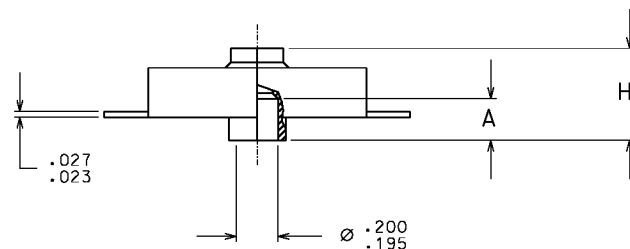
187012-3-11

2ND DASH NO. A=.273, H=.413 MAX
STRUCTURE THICKNESS .130-.139


THREAD SIZE = 10-32UNJF-3B

BASIC PART NUMBER

2ND DASH NO.	STRUCTURE THICKNESS		A $\pm .005$	H MAX
	MIN	MAX		
1	.030	.039	.173	.313
2	.040	.049	.183	.323
3	.050	.059	.193	.333
4	.060	.069	.203	.343
5	.070	.079	.213	.353
6	.080	.089	.223	.363
7	.090	.099	.233	.373
8	.100	.109	.243	.383
9	.110	.119	.253	.393
10	.120	.129	.263	.403
11	.130	.139	.273	.413
12	.140	.149	.283	.423
13	.150	.159	.293	.433
14	.160	.169	.303	.443
15	.170	.179	.313	.453



A	ECN # 7831	9-9-02
ISSUE	DESCRIPTION	DATE
REVISION 0218-002		

NEXT ASSEMBLY	UNLESS OTHERWISE SPECIFIED DIMENSIONS ARE IN INCHES, TOLERANCES FRACTION ANGLES	DRAWN BY: DATE CKT 6-17-02	 THE MONADNOCK COMPANY CITY OF INDUSTRY, CALIFORNIA		
	MATERIAL: NOTED	CHECKED BY: DATE R. DUENAS 06-24-02	TITLE: NUT PLATE		
	HEAT TREAT: NOTED	APPROVED BY: DATE T. CSIK 07-01-02	FLOATING, SELF-LOCKING ALLOY STEEL, 10-32 SIZE		
	FINAL PROTECTIVE FINISH: NOTED	APPROVED BY: DATE J. FLORES 07-03-02	CODE INVENT. NO. 60119	SIZE B	DRAWING NUMBER: 187012-3-()
		MFG. ACCEPT.: DATE R. PAUL 07-08-02	SCALE: NONE	SALES	SHEET 1 OF 1