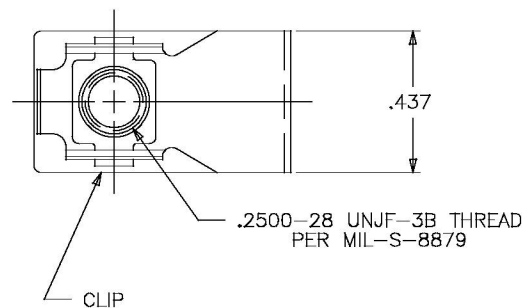
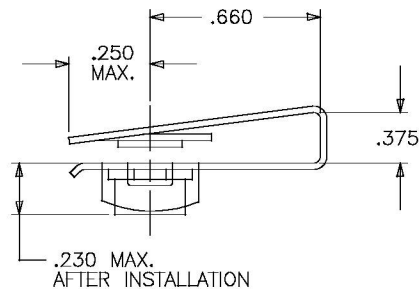



13400004-5-6



NOTES: (UNLESS OTHERWISE SPECIFIED)

1. MATERIAL:
  - 1.1. CLIP: 17-7PH CRES PER AMS5528, COND. TH1050.
  - 1.2. NUT: A286 CRES PER AMS5525, HEAT TREATED.
2. FINISH:
  - 2.1. CLIP: PASSIVATED PER QQ-P-35.
  - 2.2. NUT: PASSIVATED PER QQ-P-35. DRY FILM LUBRICANT PER MIL-L-46010 TYPE I, OR EQUIVALENT.
3. INSTALLATION HOLE SIZE: .283-.328 DIAMETER.
4. MOUNTING SHEET THICKNESS: .020-.125.
5. NOMINAL EDGE DISTANCE: .625 MAX.
6. LOCKING TORQUE PER MIL-N-25027.

NEXT ASSEMBLY END ITEM	UNLESS OTHERWISE SPECIFIED DIMENSIONS ARE IN INCHES. TOLERANCES DECIMALS FRACTION ANGLES $\pm .010$	DRAWN BY: F.D.	DATE: 11-25-92	 <b>THE MONADNOCK COMPANY</b> CITY OF INDUSTRY, CALIFORNIA		
	MATERIAL: NOTED	CHECKED BY:	DATE:			
	HEAT TREAT: NOTED	APPROVED BY:	DATE:	TITLE: NUT ASSY.- CLIP-ON TYPE 4-28 SIZE		
	FINAL PROTECTIVE FINISH: NOTED	APPROVED BY:	DATE:			
		MFG. ACCEP.T.:	DATE:	CODE INDET. NO. 60119	SIZE B	DRAWING NUMBER: 13400004-5-6
				SCALE: NONE	SALES	SHEET 1 OF 1

ISSUE	DESCRIPTION	DATE
	REVISION	9213-013