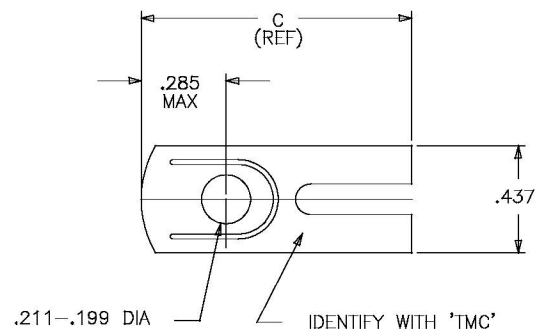


13100060-2-2



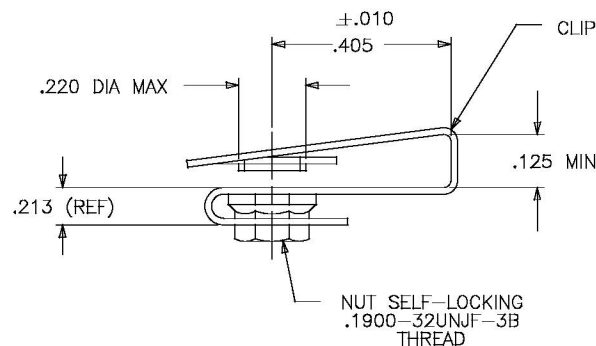
NOTES:

1. MATERIAL:  
CLIP: A286 CRES PER AMS5525, 140 K.S.I. MINIMUM, .020 THICK.  
NUT: A286 CRES PER AMS 5731 CAPABLE OF AMS5732, AMS5734, AND AMS5737.
2. FINISH:  
CLIP: PASSIVATED PER QQ-P-35.  
NUT: SILVER PLATED PER AMS 2411


3. LOCKING TORQUE PER MIL-N-25027.
4. DIMENSIONS: MILLIMETERS/INCHES.
5. INSTALLATION HOLE SIZE: .222-.262 DIA
6. PART CALLOUT EXP:

13100060 - 2 - 2

SECOND DASH NUMBER = .125 MIN  
FIRST DASH NUMBER = .405 DIM



ISSUE	DESCRIPTION	DATE
REVISION	9513-014	

NEXT ASSEMBLY	UNLESS OTHERWISE SPECIFIED DIMENSIONS ARE IN INCHES. TOLERANCES DECIMALS FRACTION ANGLES		DRAWN BY: DATE		 THE MONADNOCK COMPANY CITY OF INDUSTRY, CALIFORNIA			
	± .010		CKT 9-14-95					
	MATERIAL:		CHECKED BY: DATE		TITLE:  NUT ASSY.— CLIP ON, 10-32 SIZE STAINLESS STEEL			
	NOTED		APPROVED BY: DATE					
	HEAT TREAT:		APPROVED BY: DATE		CODE IDENT. NO. SIZE DRAWING NUMBER: 60119 B 13100060-2-2			
NOTED		DATE						
FINAL PROTECTIVE FINISH:		MFG. ACCEPT:		SCALE: NONE SALES SHEET 1 OF 1				
NOTED								