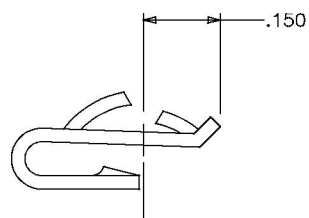
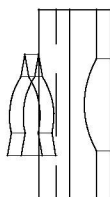
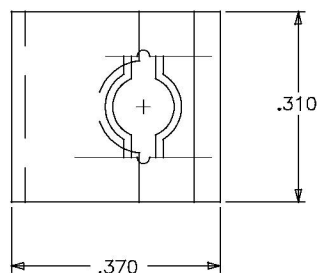


130332-1




## INSTALLATION DATA

PANEL THICKNESS	MAX. EDGE DISTANCE FROM CENTER HOLE	HOLE DIA.
.032-.035	.156	.187

## NOTES: UNLESS OTHERWISE SPECIFIED

1. MATERIAL: 1064 CARBON STEEL, .022 ± .001 THICK PER ASTM-A-684, AND ASTM-A-682.
2. HEAT TREAT: HRC 39-43
3. FINISH: ZINC ELECTROPLATED PER ASTM-B-633, TYPE III, CLASS SC3.
4. THREAD SIZE OR SCREW SIZE = 6Z

	ECN # 6889	03-23-00
ISSUE	DESCRIPTION	DATE
	REVISION	9713-004

NEXT ASSEMBLY	UNLESS OTHERWISE SPECIFIED DIMENSIONS ARE IN INCHES. TOLERANCES DECIMALS FRACTION ANGLES ± .010 ± 1°	DRAWN BY: C.P.M. 10-18-99 DATE	 THE MONADNOCK COMPANY CITY OF INDUSTRY, CALIFORNIA		
	MATERIAL: NOTED	CHECKED BY: J. ROWS 10-19-99 DATE			
	HEAT TREAT: NONE	APPROVED BY: C. MARTIN 10-26-99 DATE			
	FINAL PROTECTIVE FINISH: NOTED	APPROVED BY: D. MARTIN 10-22-99 DATE			
		MFG. ACCEPT: D. PAUL 10-22-99 DATE	TITLE: CLIP NUT, J TYPE, 6Z SIZE		
			CODE INDENT. NO. 60119	SIZE B	DRAWING NUMBER: 130332-1
			QUANTITY NONE	SALES	SHEET 1 OF 1