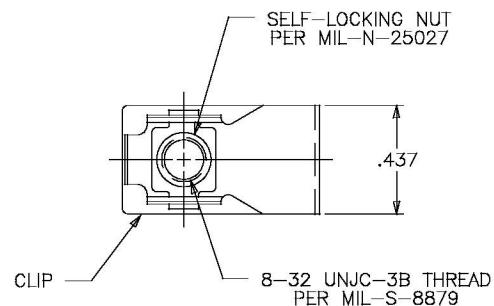
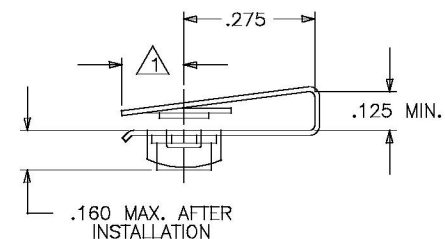



130321-1-2



NOTES: (UNLESS OTHERWISE SPECIFIED)

1. .200 MAX. FOR PARTS WITH "A" DIM. .275 OR .405.
.250 FOR PARTS WITH "A" DIM. .510, .530 OR .660.
2. MATERIAL: CLIP & NUT – CARBON STEEL.
3. HEAT TREAT: CLIP: AUSTEMPER TO Rc 48 MIN.
NUT: Rc 40 MIN.
4. FINISH: CLIP & NUT– ZINC PLATED PER ASTM-B-633,
TYPE II, CLASS SC 2. COLOR YELLOW.
5. INSTALLATION DATA:
 - 5.1. INSTALLATION HOLE: .190–.229 DIA.
 - 5.2. PANEL THICKNESS: .060–.125.

ISSUE	DESCRIPTION	DATE
REVISION	9413-004	

NEXT ASSEMBLY END ITEM	UNLESS OTHERWISE SPECIFIED DIMENSIONS ARE IN INCHES, TOLERANCES DECIMALS FRACTION ANGLES ± .010		DRAWN BY: MARK	DATE 7-27-94	 THE MONADNOCK COMPANY CITY OF INDUSTRY, CALIFORNIA		
	MATERIAL: NOTED		CHECKED BY:	DATE			
	HEAT TREAT: NOTED		APPROVED BY:	DATE	TITLE: CLIP-NUT ASSEMBLY, 8-32, SELF LOCKING		
	FINAL PROTECTIVE FINISH: NOTED		APPROVED BY:	DATE			
		MFG. ACCEPT:		DATE	CODE IDENT. NO. 60119	SIZE B	DRAWING NUMBER: 130321-1-2
					SCALE: NONE	SALES	SHEET 1 OF 1