

122022-()

TABLE 1

FIRST DASH NO.	THREAD SIZE PER FED-STD-H28 2 LEAD, MODIFIED MINOR Ø	A MAX.	B MAX.	C REF.	D ±.015	E MIN.	H ±.020	J ± .002	K +.005 - .000	T ± .005	AXIAL STRENGTH LBS. MIN.
-5	.3125-24UNF-3B	1.150	.710	.438	.560	.160	.535	.875	.125	.030	4,600
-6	.3750-24UNF-3B	1.150	.800	.438	.630	.160	.610	.875	.125	.030	7,360

NOTES, UNLESS OTHERWISE SPECIFIED:

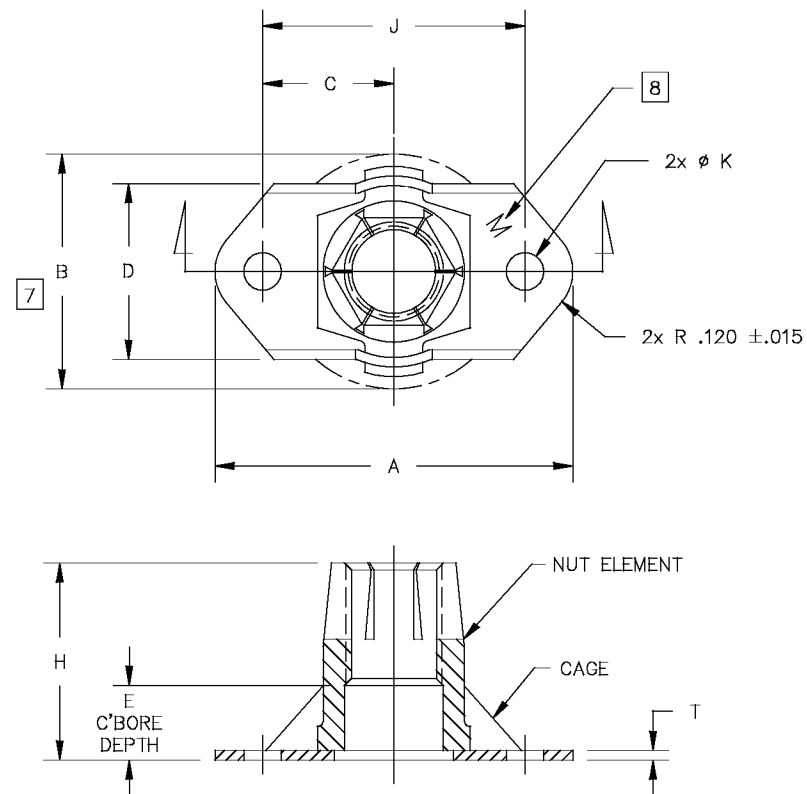
- MATERIAL:  
NUT ELEMENT: A286 CRES PER AMS5732, AMS5737 OR AMS5731.  
CAGE: 17-7 CRES PER AMS5528, AMS5229 OR MIL-S-25043.
- HEAT TREAT:  
NUT ELEMENT: 160 KSI MIN. PER AMS-H-6875 OR AMS2759.  
CAGE: CONDITION TH1050 PER AMS-H-6875 OR AMS2759.
- FINISH:  
NUT ELEMENT: SILVER PLATE PER AMS2410 AND DRY FILM LUBE PER AS5272.  
CAGE: PASSIVATE PER AMS2700.
- ANTI-SEIZE COMPOUND PER MIL-PRF-907 IS PERMISSIBLE ON INTERNAL THREADS OF NUT AFTER DRY FILM LUBRICATION.
- THE NUT AND CAGE PORTION OF THE ASSEMBLY SHALL FORM ONE INTEGRAL UNIT.
- THE NUT FURNISHED WITH THE ASSEMBLY SHALL BE REMOVABLE AND REPLACEABLE.
- THE NUT ELEMENT SHALL FLOAT .020 MIN. RADially FROM THE CAGE CENTERLINE WITHIN A MAX. ENVELOPE "B" AS SPECIFIED IN TABLE I.
- MANUFACTURER'S IDENTIFICATION LETTER "M", .010 MAXIMUM DEPTH. MARKING LOCATION & ORIENTATION ARE OPTIONAL.
- NUT PLATE ASSEMBLY IS INTENDED FOR WITH LOCKHEED STUD BOLT PART NO. C100004 OR C100098.
- NUT PLATE ASSEMBLY MUST CONFORM TO LOCKHEED DRAWING NO. C100006 & MEET THE REQUIREMENTS OF LOCKHEED SPEC. M250.

11. EXAMPLE OF PART NUMBER CALLOUT:

122022-5

INTERNAL THREAD  
.3125-24UNF-3B (SEE TABLE 1)

BASIC PART NO.



ITEM NO.	QTY. REQ'D	PART NO.	DESCRIPTION	MATERIAL OR NOTES
NEXT ASSEMBLY			UNLESS OTHERWISE SPECIFIED DIMENSIONS ARE IN INCHES. TOLERANCES DECIMALS FRACTION ANGLES ±.010 — ±5°	IBM # —
END ITEM			MATERIAL: NOTED	DRAWN BY: DATE T. TRAN 07-21-06
			HEAT TREAT: NOTED	ENG. APPROVAL: DATE
PREVIOUS ASSEMBLY			FINAL PROTECTIVE FINISH: NOTED	QUAL. ACCEPT.: DATE
				MFG. ACCEPT.: DATE
<p>REPRODUCTION OF THIS DRAWING OR MANUFACTURE OF THE PROPRIETARY PARTS SHOWN HERE WITHOUT WRITTEN PERMISSION OF LISSI AEROSPACE MONADNOCK IS PROHIBITED</p>				<p><b>lisii AEROSPACE</b> THE MONADNOCK COMPANY 18301 E. ARENTH AVE. CITY OF INDUSTRY, CALIFORNIA</p> <p>TITLE: NUT PLATE ASSY. TWO LUG, FLOATING A286 CRES, 160 KSI</p> <p>CODE, IDENT. NO. 60119 SIZE B DRAWING NUMBER: 122022-()</p> <p>SCALE: N/A SALES SHEET 1 OF 1</p>