

186502-( )B( )( )

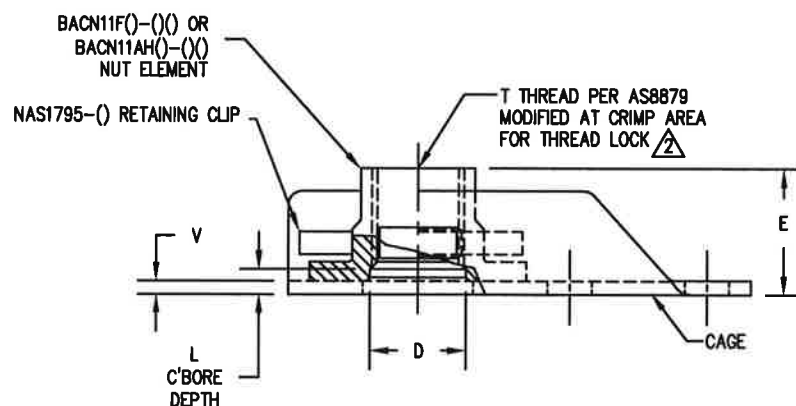
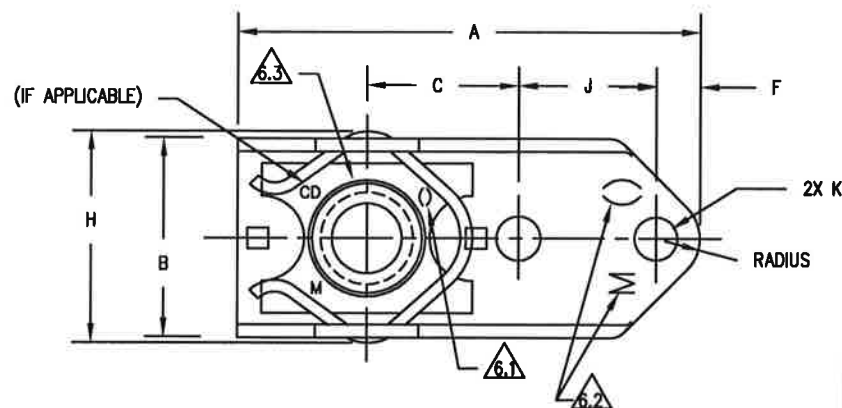


TABLE I

| DASH NO | T<br>THREAD SIZE | A<br>MAX | B<br>MAX | C<br>±.005 | ØD<br>REF | F<br>MIN | H<br>MAX | J<br>±.002 | ØK<br>±.005 | V<br>±.005 | TORQUE OUT<br>(IN.LBS.) | PUSHOUT<br>(LBS.) |
|---------|------------------|----------|----------|------------|-----------|----------|----------|------------|-------------|------------|-------------------------|-------------------|
| 3B( )   | .1900-32UNJF-3B  | 1.051    | .445     | .344       | .194      | .100     | .484     | .312       | .098        | .032       | 90                      | 125               |
| 4B( )   | .2500-28UNJC-3B  | 1.306    | .547     | .500       | .254      | .125     | .584     | .312       | .098        | .032       | 160                     | 150               |
| 5B( )   | .3125-24UNJC-3B  | 1.386    | .643     | .500       | .317      | .125     | .720     | .312       | .130        | .040       | 280                     | 175               |

TABLE II

| DASH NO | E<br>REF | L<br>REF |
|---------|----------|----------|
| 3B1( )  | .250     | .070     |
| 3B2( )  | .312     | .125     |
| 3B3( )  | .375     | .188     |
| 3B4( )  | .438     | .250     |
| 3B5( )  | .500     | .313     |
| 3B6( )  | .562     | .375     |

| DASH NO | E<br>REF | L<br>REF |
|---------|----------|----------|
| 4B1( )  | .295     | .070     |
| 4B2( )  | .357     | .125     |
| 4B3( )  | .419     | .188     |
| 4B4( )  | .481     | .250     |
| 4B5( )  | .543     | .313     |
| 4B6( )  | .605     | .375     |

| DASH NO | E<br>REF | L<br>REF |
|---------|----------|----------|
| 5B1( )  | .344     | .070     |
| 5B2( )  | .400     | .125     |
| 5B3( )  | .461     | .188     |
| 5B4( )  | .524     | .250     |
| 5B5( )  | .586     | .313     |
| 5B6( )  | .649     | .375     |

©FAA-TSO AUTHORIZED PART

|      |         |       |         |
|------|---------|-------|---------|
| C    | 10930   | JC    | 10/7/15 |
| B    | 10047   | TD    | 1/3/13  |
| REV. | ECN NO. | INIT. | DATE    |

REPRODUCTION OF THIS DRAWING OR MANUFACTURE OF THE PROPRIETARY PARTS SHOWN HERE WITHOUT WRITTEN PERMISSION OF LI SI AEROSPACE THE MONADNOCK COMPANY IS PROHIBITED

|                           |   |                               |   |
|---------------------------|---|-------------------------------|---|
| NEXT ASSEMBLY<br>END ITEM | UNLESS OTHERWISE SPECIFIED DIMENSIONS ARE IN INCHES. TOLERANCES ARE AS FOLLOWS:<br>DECIMALS ±.005 (C) FRACTION - ANGLES ±2° | IBM NUMBER:<br>N/A            | <b>lisi</b> AEROSPACE THE MONADNOCK COMPANY<br>18728 E. GALE AVE.<br>CITY OF INDUSTRY, CALIFORNIA |
|                           | MATERIAL:<br>NOTED  | PROJECT NUMBER:<br>0712-002   |   |
| THIRD ANGLE PROJECTION    | HEAT TREAT:<br>NOTED  | DRAWN BY: TSC DATE: 4/4/08    | TITLE:<br>NUT PLATE, 1 LUG,<br>FLOATING, SELF-LOCKING,<br>(BACN11G( )B( )( ) EQUIV.)              |
|                           | FINAL PROTECTIVE FINISH:<br>NOTED   | APPROVED BY: TSC DATE: 4/4/08 | CAGE CODE   SIZE   DRAWING NUMBER:<br>60119 A 186502-( )B( )( )                                   |
|                           |   |                               | SCALE: NONE SALES SHEET 1 OF 2  |

186502-( )B( )( )

NOTES (UNLESS OTHERWISE SPECIFIED) :

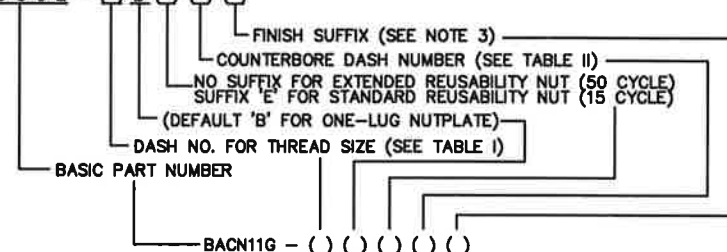
1. MATERIAL:
- 1.1 CAGE: A286 CRES PER AMS 5525.
- 1.2 NUT (EXTENDED REUSABILITY, 50 CYCLE): BACN11F, A286 CRES PER AMS 5525, AMS 5731, AMS 5732, OR AMS 5737. (REF.)
- 1.3 NUT (STANDARD REUSABILITY, 15 CYCLE): BACN11AH, A286 CRES PER AMS 5525, AMS 5731, AMS 5732, OR AMS 5737. (REF.)
- 1.4 CLIP: NAS1795, XM-28 STAINLESS PER ASTM A313/A313M. (REF.)
2. THREADS PER AS8879. NO LETTER 'E' SUFFIX DESIGNATES EXTENDED REUSABILITY NUT. LETTER 'E' SUFFIX DESIGNATES STANDARD REUSABILITY NUT.
3. FINISH SUFFIX DESIGNATIONS:
- 3.1 NO SUFFIX: NUT ELEMENT IS CADMIUM PLATED PER AMS-QQ-P-416, TYPE II, CLASS 2, AND SOLID FILM LUBRICANT AS NOTED. CAGE IS PASSIVATED PER AMS 2700. CLIP IS PASSIVATED PER AMS 2700. (CLASS 125TC4)
- 3.2 SUFFIX 'CD': NUT ELEMENT IS CADMIUM PLATED PER AMS-QQ-P-416, TYPE II, CLASS 2, AND SOLID FILM LUBRICANT AS NOTED. CAGE IS CADMIUM PLATED PER AMS-QQ-P-416, TYPE II, CLASS 2. CLIP IS PASSIVATED PER AMS 2700. (CLASS 125TC4)
- 3.3 SUFFIX 'CM': NUT ELEMENT IS PASSIVATED PER AMS 2700 (COPPER FLASH OR PLATE PER AMS 2418 OPTIONAL), AND SOLID FILM LUBRICANT AS NOTED. CAGE IS PASSIVATED PER AMS 2700. CLIP IS PASSIVATED PER AMS 2700. (CLASS 125TC4)
- 3.4 SUFFIX 'F': NUT ELEMENT IS SILVER PLATED PER AMS 2410. CAGE IS PASSIVATED PER AMS 2700. CLIP IS PASSIVATED PER AMS 2700. (CLASS 125TC9)
- 3.5 SUFFIX 'CMN': NUT ELEMENT IS PASSIVATED PER AMS 2700 (COPPER FLASH OR PLATE PER AMS 2418 OPTIONAL) AND SOLID FILM LUBRICANT AS NOTED. CAGE IS ZINC-NICKEL PLATED PER BAC5637, TYPE II, CLASS 2 OR ZINC-NICKEL PLATED PER AMS 2417 TYPE 2 EXCEPT HYDROGEN EMBRITTLEMENT TESTING IS NOT REQUIRED. CLIP IS PASSIVATED PER AMS 2700. (CLASS 125TC4)
- 3.6 SUFFIX 'CMK': NUT ELEMENT IS PASSIVATED PER AMS 2700 (COPPER FLASH OR PLATE PER AMS 2418 OPTIONAL) AND SOLID FILM LUBRICANT AS NOTED. CAGE IS PASSIVATED PER AMS 2700 AND ALUMINUM PIGMENT COATED PER BMS 10-85, TYPE I, CLASS A. CLIP IS PASSIVATED PER AMS 2700. (CLASS 125TC3)
4. LUBRICATION: NUT – BACN11F AND BACN11AH, SOLID FILM PER AS5272, TYPE I OR II, OR MIL-PRF-46010, TYPE III TO THREADS ONLY, OVERSPRAY ALLOWED. AS5272 SHALL BE IN ACCORDANCE WITH THE QPL IN AS5272SUP. (SILVER PLATED NUTS ARE UNLUBRICATED. PLATING ACTS AS LUBRICANT).
5. NUT FLOAT .030 MINIMUM RADIALLY FROM CENTERED POSITION.

6. MARKING INFORMATION:

- 6.1 NUTS SHALL BE MARKED ON TOP OF FLANGE PER BACN11F OR BACN11AH (REF: MANUFACTURER'S SYMBOL 'M', LETTERS 'CD' FOR CADMIUM PLATED NUT ELEMENTS, C'BORE DASH NO., AND LETTER 'E' FOR STANDARD REUSABILITY NUT). MARKING RAISED OR DEPRESSED .010", LOCATION OPTIONAL BUT MUST BE VISIBLE.
- 6.2 CAGE SHALL BE MARKED WITH MANUFACTURER'S SYMBOL 'M'; LETTER 'C' TO INDICATE PASSIVATED A286 CRES, OR 'CD' TO INDICATE CADMIUM PLATED A286 CRES. MARKING RAISED OR DEPRESSED .010", LOCATION OPTIONAL BUT MUST BE VISIBLE.
- 6.3 BACN11F NUTS (EXTENDED REUSABILITY, 50 CYCLES): MARK WITH PERMANENT WHITE MARK, CLEARLY VISIBLE, AND NOT ON BEARING SURFACE OR ON THREADS. BACN11AH NUTS (STANDARD REUSABILITY, 15 CYCLES): MARK WITH LETTER 'E'. MARKING TO BE RAISED OR DEPRESSED .010". MUST BE CLEARLY VISIBLE.
7. PROCUREMENT SPECIFICATION: BPS-N-70, CLASS 125TC3, TC4 AND TC9 (BACN11G), EXCEPT AS NOTED.
8. MAGNETIC PERMEABILITY: NUT, CLIP, AND CAGE MUST HAVE MAGNETIC PERMEABILITY LESS THAN 2.0 (AIR=1.0) FOR A FIELD STRENGTH H=200 OERSTEDS USING A MAGNETIC PERMEABILITY INDICATOR PER ASTM A342/A342M, METHOD 3.
9. DIMENSIONS APPLY AFTER FINISH.

EXAMPLE PART NUMBER:

1 8 6 5 0 2 - ( ) B ( ) ( )



©FAA-TSO AUTHORIZED PART

|  |          |        |  |                               |  |                                 |  |                                       |  |   |  |                     |          |                     |       |   |     |                        |  |                                 |  |                     |  |                     |  |
|--|----------|--------|--|-------------------------------|--|---------------------------------|--|---------------------------------------|--|---|--|---------------------|----------|---------------------|-------|---|-----|------------------------|--|---------------------------------|--|---------------------|--|---------------------|--|
| <p>REPRODUCTION OF THIS DRAWING OR MANUFACTURE OF THE PROPRIETARY PARTS SHOWN HERE WITHOUT WRITTEN PERMISSION OF LI SI AEROSPACE THE MONADNOCK COMPANY IS PROHIBITED</p> |          |        |  | <p>THIRD ANGLE PROJECTION</p> |  | <p>HEAT TREAT: NOTED</p>        |  | <p>FINAL PROTECTIVE FINISH: NOTED</p> |  | <p>UNLESS OTHERWISE SPECIFIED DIMENSIONS ARE IN INCHES. TOLERANCES ARE AS FOLLOWS:</p> <table border="1"> <tr> <td>DECIMALS</td> <td>FRACTION</td> <td>ANGLES</td> </tr> <tr> <td>±.005</td> <td>—</td> <td>±2°</td> </tr> </table> |  | DECIMALS            | FRACTION | ANGLES              | ±.005 | — | ±2° | <p>IBM NUMBER: N/A</p> |  | <p>PROJECT NUMBER: 0712-002</p> |  | <p>DATE: 4/4/08</p> |  | <p>DATE: 4/4/08</p> |  |
| DECIMALS   | FRACTION | ANGLES |  |                               |  |                                 |  |                                       |  |   |  |                     |          |                     |       |   |     |                        |  |                                 |  |                     |  |                     |  |
| ±.005  | —        | ±2°    |  |                               |  |                                 |  |                                       |  |   |  |                     |          |                     |       |   |     |                        |  |                                 |  |                     |  |                     |  |
| <p>END ITEM</p>  |          |        |  | <p>MATERIAL: NOTED</p>        |  | <p>PROJECT NUMBER: 0712-002</p> |  | <p>DATE: 4/4/08</p>                   |  | <p>DATE: 4/4/08</p>   |  | <p>DATE: 4/4/08</p> |          | <p>DATE: 4/4/08</p> |       |   |     |                        |  |                                 |  |                     |  |                     |  |
| <p>REV. ECN NO. INIT. DATE</p>   |          |        |  | <p>DATE: 10/7/15</p>          |  | <p>DATE: 1/3/13</p>             |  | <p>DATE: 1/3/13</p>                   |  | <p>DATE: 1/3/13</p>   |  | <p>DATE: 1/3/13</p> |          | <p>DATE: 1/3/13</p> |       |   |     |                        |  |                                 |  |                     |  |                     |  |