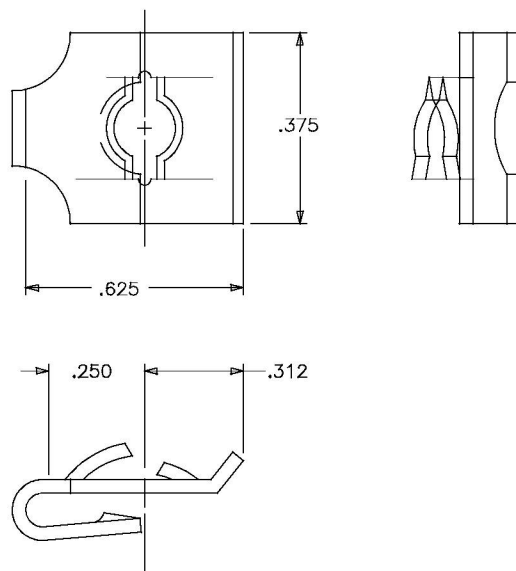


130339-(())




INSTALLATION DATA

DASH NO.	PANEL THICKNESS	MAX. EDGE DISTANCE FROM CENTER HOLE	HOLE DIA.
-5	.094-.102	.250	.250

NOTES: UNLESS OTHERWISE SPECIFIED

- MATERIAL: CARBON STEEL, .025 \pm .001 THICK PER ASTM-A-684, AND ASTM-A-682.
- HEAT TREAT: TEMPERED
- FINISH: PHOSPHATE TREATMENT PER SPECIFICATION MIL-C-490, TYPE I, AND ZINC CHROMATE PRIMER PER SPECIFICATION MIL-P-8585
SUFFIX Z = ZINC METAL SPRAY PER MIL-M-6874
- THREAD SIZE OR SCREW SIZE = 6Z
- PART CALLOUT EXAMPLE:
130339-00
FINISH
DASH NO.

ISSUE	DESCRIPTION	DATE
REVISION	9913-015	

NEXT ASSEMBLY	UNLESS OTHERWISE SPECIFIED DIMENSIONS ARE IN INCHES. TOLERANCES DECIMALS FRACTION ANGLES $\pm .010$ $\pm 1^\circ$	DRAWN BY: DATE CKT 1-10-00	 THE MONADNOCK COMPANY CITY OF INDUSTRY, CALIFORNIA		
	MATERIAL: NOTED	CHECKED BY: DATE C. TANAKA 01-12-00			
	HEAT TREAT: NONE	APPROVED BY: DATE CKT 01-12-00			
	FINAL PROTECTIVE FINISH: NOTED	APPROVED BY: DATE D. MARTIN 01-13-00 MFG. ACCEPT: DATE D. PANZER 01-12-00			
			TITLE: CLIP NUT, J TYPE, 6Z SIZE	CODE IDENT. NO. 60119	SIZE B
			DRAWING NUMBER: 130339-(())	SALES NONE	SHEET 1 OF 1