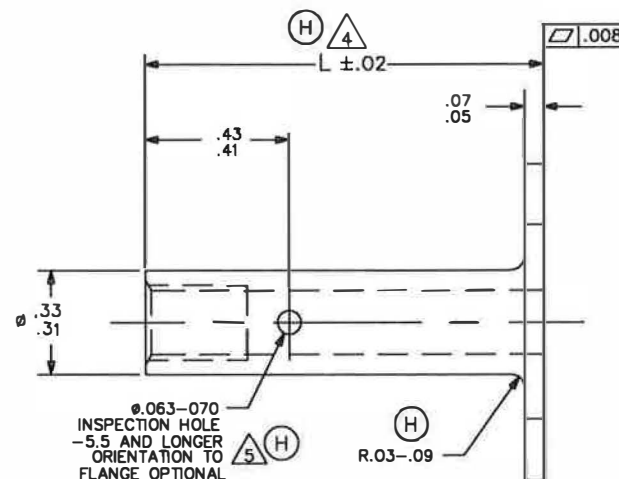
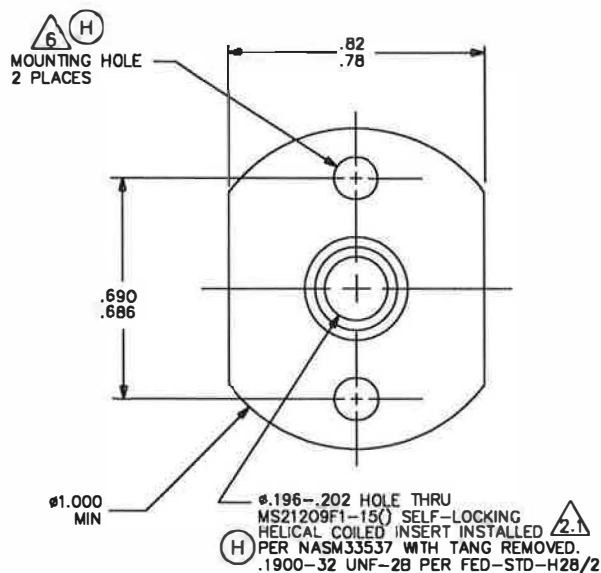


5300021-() ()



NOTES (UNLESS OTHERWISE SPECIFIED):

1. MATERIAL: 6061-T6 ALUMINUM PER QQ-A-430 OR ASTM B221
2. FINISH: ANODIZED PER MIL-A-8625, TYPE I, OR CHEMICAL CONVERSION COATING PER MIL-DTL-5541, CLASS 1A.
3. HELICAL INSERT:
NO SUFFIX = STANDARD FINISH (MS21209F1-15)
SUFFIX "W" = DRY FILM LUBE (MS21209F1-15L)
SUFFIX "Y" = CAD PLATE (MS21209F1-15P)
4. NO BURRS, NO SLIVERS, AND BREAK ALL SHARP EDGES .005-.015.
5. L = LENGTH IN .100 INCREMENTS
-3 = .300, -30 = 3.000. MIN LENGTH = -3
AVAILABLE IN .050 INCREMENTS (-1.5 = .150)
6. -5 AND BELOW HAVE NO INSPECTION HOLE, MUST HAVE "NH" SUFFIX.
7. NO SUFFIX = .098-.103 DIA RIVET HOLES
SUFFIX "A" = .128-.135 DIA RIVET HOLES
SUFFIX "NH" = NO INSPECTION HOLES
SUFFIX "B" = DEBURRED INSPECTION HOLE
8. DIMENSIONS APPLY AFTER FINISH.
9. IDENTIFICATION:
RUBBER STAMP OR EQUIVALENT THE TMC PART NUMBER AND LOGO. PARTS WITHOUT SUFFICIENT WILL BE BAGGED AND TAGGED.

9. PART CALLOUT:

5300021-() () ()

NO CODE = INSPECTION HOLE
"NH" CODE = NO INSPECTION HOLE

NO CODE = STANDARD INSERT FINISH
"W" CODE = DRY FILM LUBED INSERT
"Y" CODE = CADMIUM PLATED INSERT

NO CODE = INSPECTION HOLE NOT DEBURRED
"B" CODE = INSPECTION HOLE DEBURRED

NO CODE = .098-.103 DIA RIVET HOLES
"A" CODE = .128-.135 DIA RIVET HOLES

LENGTH CODE

FAA-TSO AUTHORIZED PART

NEXT ASSEMBLY		UNLESS OTHERWISE SPECIFIED DIMENSIONS ARE IN INCHES. TOLERANCES ARE AS FOLLOWS: DECIMALS FRACTION ANGLES		IBM NUMBER: N/A		lisi AEROSPACE THE MONADNOCK COMPANY 18728 E. GALE AVE. CITY OF INDUSTRY, CALIFORNIA	
END ITEM		MATERIAL: NOTED		PROJECT NUMBER: 9853-001		TITLE: SPACER NUT PLATE, 2 LUG, LIGHT DUTY, SELF-LOCKING, 10-32 SIZE	
THIRD ANGLE PROJECTION		HEAT TREAT: N/A		DRAWN BY: DATE CKT 4/18/99		CAGE CODE SIZE DRAWING NUMBER: 60119 A 5300021-() ()	
		FINAL PROTECTIVE FINISH: NOTED		APPROVED BY: DATE RAD 4/19/99		SCALE: NONE SALES SHEET 1 OF 1	

H	11484	JC	6/22/17	REPRODUCTION OF THIS DRAWING OR MANUFACTURE OF THE PROPRIETARY PARTS SHOWN HERE WITHOUT WRITTEN PERMISSION OF LISI AEROSPACE THE MONADNOCK COMPANY IS PROHIBITED
G	7524	CM	8/8/01	
REV.	ECN NO.	INIT.	DATE	