

186502-()A()()

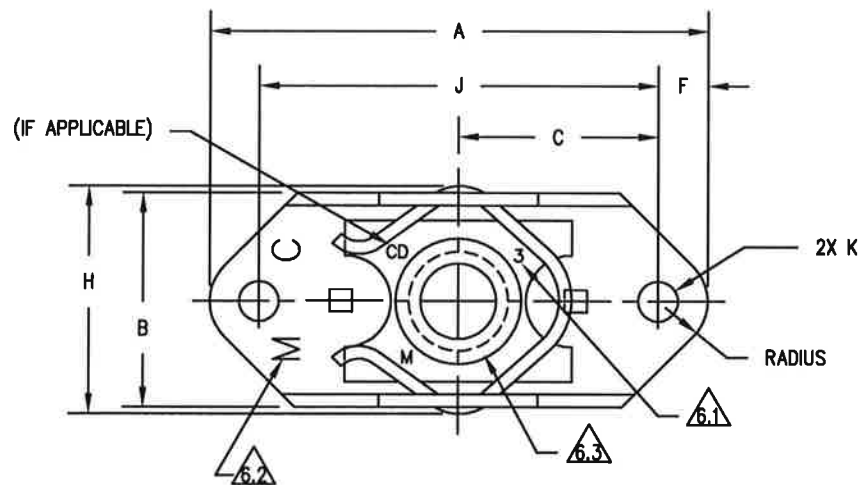


TABLE I

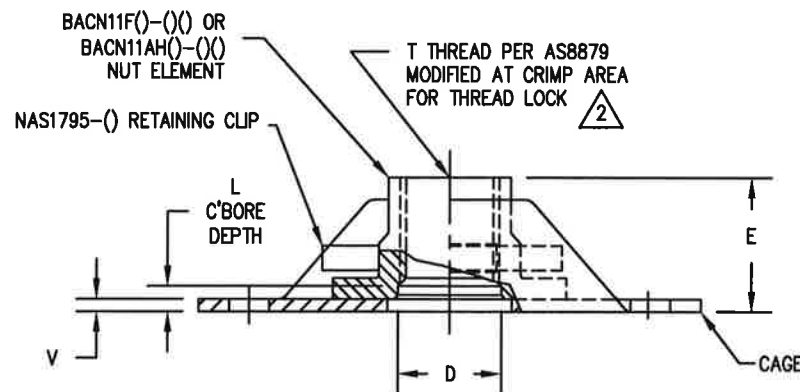
DASH NO	T THREAD SIZE	A MAX	B MAX	C ±.005	ØD REF	F MIN	H MAX	J ±.002	ØK + .005 - .000	V ±.005	TORQUE OUT (IN.LBS.)	PUSHOUT (LBS.)
3A()	.1900-32UNJF-3B	.948	.445	.344	.194	.100	.484	.688	.098	.032	90	200
4A()	.2500-28UNJC-3B	1.292	.547	.500	.254	.125	.584	1.000	.098	.032	160	225
5A()	.3125-24UNJC-3B	1.292	.643	.500	.317	.125	.720	1.000	.130	.040	280	250

© TABLE II

DASH NO	E REF	L REF
3A1()	.250	.070
3A2()	.312	.125
3A3()	.375	.188
3A4()	.438	.250
3A5()	.500	.313
3A6()	.562	.375

DASH NO	E REF	L REF
4A1()	.295	.070
4A2()	.357	.125
4A3()	.419	.188
4A4()	.481	.250
4A5()	.543	.313
4A6()	.605	.375

DASH NO	E REF	L REF
5A1()	.344	.070
5A2()	.400	.125
5A3()	.461	.188
5A4()	.524	.250
5A5()	.586	.313
5A6()	.649	.375



©FAA-TSO AUTHORIZED PART

C	10930	JC	10/7/15
B	10047	TD	1/3/13
REV.	ECN NO.	INIT.	DATE

REPRODUCTION OF THIS DRAWING OR MANUFACTURE OF THE PROPRIETARY PARTS SHOWN HERE WITHOUT WRITTEN PERMISSION OF LISI AEROSPACE THE MONADNOCK COMPANY IS PROHIBITED

NEXT ASSEMBLY END ITEM	UNLESS OTHERWISE SPECIFIED DIMENSIONS ARE IN INCHES. TOLERANCES ARE AS FOLLOWS: DECIMALS ±.005 FRACTION © ANGLES ±2°	ISM NUMBER: N/A	lisi AEROSPACE THE MONADNOCK COMPANY 16728 E. GALE AVE. CITY OF INDUSTRY, CALIFORNIA
	MATERIAL: NOTED	PROJECT NUMBER: 0712-002	
THIRD ANGLE PROJECTION	HEAT TREAT: NOTED	DRAWN BY: DATE TSC 4/4/08	CAGE CODE SIZE 60119 A
	FINAL PROTECTIVE FINISH: NOTED	APPROVED BY: DATE TSC 4/4/08	DRAWING NUMBER: 186502-()A()()
		SCALE: NONE	SALES SHEET 1 OF 2

186502-()A()()

NOTES (UNLESS OTHERWISE SPECIFIED) :

1. MATERIAL:
- 1.1 CAGE: A286 CRES PER AMS 5525.
- 1.2 NUT (EXTENDED REUSABILITY, 50 CYCLE): BACN11F, A286 CRES PER AMS 5525, AMS 5731, AMS 5732, OR AMS 5737. (REF.)
- 1.3 NUT (STANDARD REUSABILITY, 15 CYCLE): BACN11AH, A286 CRES PER AMS 5525, AMS 5731, AMS 5732, OR AMS 5737. (REF.)
- 1.4 CLIP: NAS1795, XM-28 STAINLESS STEEL PER ASTM A313/A313M. (REF.)
2. THREADS PER AS8879. NO LETTER 'E' SUFFIX DESIGNATES EXTENDED REUSABILITY NUT. LETTER 'E' SUFFIX DESIGNATES STANDARD REUSABILITY NUT.
3. FINISH SUFFIX DESIGNATIONS:
- 3.1 NO SUFFIX: NUT ELEMENT IS CADMIUM PLATED PER AMS-QQ-P-416, TYPE II, CLASS 2, AND SOLID FILM LUBRICANT AS NOTED. CAGE IS PASSIVATED PER AMS 2700. CLIP IS PASSIVATED PER AMS 2700. (CLASS 125TC4)
- 3.2 SUFFIX 'CD': NUT ELEMENT IS CADMIUM PLATED PER AMS-QQ-P-416, TYPE II, CLASS 2, AND SOLID FILM LUBRICANT AS NOTED. CAGE IS CADMIUM PLATED PER AMS-QQ-P-416, TYPE II, CLASS 2. CLIP IS PASSIVATED PER AMS 2700. (CLASS 125TC4)
- 3.3 SUFFIX 'CM': NUT ELEMENT IS PASSIVATED PER AMS 2700 (COPPER FLASH OR PLATE PER AMS2418 OPTIONAL), AND SOLID FILM LUBRICANT AS NOTED. CAGE IS PASSIVATED PER AMS 2700. CLIP IS PASSIVATED PER AMS 2700. (CLASS 125TC4)
- 3.4 SUFFIX 'F': NUT ELEMENT IS SILVER PLATED PER AMS 2410. CAGE IS PASSIVATED PER AMS 2700. CLIP IS PASSIVATED PER AMS2700. (CLASS 125TC9)
- 3.5 SUFFIX 'CMK': NUT ELEMENT IS PASSIVATED PER AMS 2700 (COPPER FLASH OR PLATE PER AMS 2418 OPTIONAL) AND SOLID FILM LUBRICANT AS NOTED. CAGE IS PASSIVATED PER AMS 2700 AND ALUMINUM PIGMENT COATED PER BMS10-85, TYPE I, CLASS A. CLIP IS PASSIVATED PER AMS 2700 (CLASS 125TC3).
- 3.6 SUFFIX 'CMN': NUT ELEMENT IS PASSIVATED PER AMS 2700 (COPPER FLASH OR PLATE PER AMS 2418 OPTIONAL) AND SOLID FILM LUBRICANT AS NOTED. CAGE IS ZINC-NICKEL PLATED PER BAC5637, TYPE II, CLASS 2 OR ZINC-NICKEL PLATED PER AMS 2417 TYPE 2 EXCEPT HYDROGEN EMBRITTLEMENT TESTING IS NOT REQUIRED. CLIP IS PASSIVATED PER AMS 2700. (CLASS 125TC4)
4. LUBRICATION: NUT – BACN11F AND BACN11AH, SOLID FILM PER AS5272, TYPE I OR II, OR MIL-PRF-46010, TYPE III TO THREADS ONLY, OVERSPRAY ALLOWED. AS5272 SHALL BE IN ACCORDANCE WITH THE QPL IN AS5272SUP. (SILVER PLATED NUTS ARE UNLUBRICATED. PLATING ACTS AS LUBRICANT).
5. NUT FLOAT .030 MINIMUM RADIALLY FROM CENTERED POSITION.

6. MARKING INFORMATION:



NUTS SHALL BE MARKED ON TOP OF FLANGE PER BACN11F OR BACN11AH (REF: MANUFACTURER'S SYMBOL 'M', LETTERS 'CD' FOR CADMIUM PLATED NUT ELEMENTS, C'BORE DASH NO., AND LETTER 'E' TO DESIGNATE STANDARD REUSABILITY NUT). MARKING RAISED OR DEPRESSED .010", LOCATION OPTIONAL BUT MUST BE VISIBLE.



CAGE SHALL BE MARKED WITH MANUFACTURER'S SYMBOL 'M'; LETTER 'C' TO INDICATE PASSIVATED A286 CRES, OR 'CD' TO INDICATE CADMIUM PLATED A286 CRES. MARKING RAISED OR DEPRESSED .010", LOCATION OPTIONAL BUT MUST BE VISIBLE.



BACN11F NUTS (EXTENDED REUSABILITY, 50 CYCLES): MARK WITH PERMANENT WHITE MARK, CLEARLY VISIBLE, AND NOT ON BEARING SURFACE OR ON THREADS. BACN11AH NUTS (STANDARD REUSABILITY, 15 CYCLES): MARK WITH LETTER 'E'. MARKING TO BE RAISED OR DEPRESSED .010". MUST BE CLEARLY VISIBLE.

7. PROCUREMENT SPECIFICATION: BPS-N-70, CLASS 125TC3, TC4, AND TC9 (BACN11G), EXCEPT AS NOTED.



MAGNETIC PERMEABILITY: NUT, CLIP, AND CAGE MUST HAVE MAGNETIC PERMEABILITY LESS THAN 2.0 (AIR=1.0) FOR A FIELD STRENGTH H=200 OERSTEDS USING A MAGNETIC PERMEABILITY INDICATOR PER ASTM A342/A342M, METHOD 3.

9. DIMENSIONS APPLY AFTER FINISH.

EXAMPLE PART NUMBER:

1 8 6 5 0 2 - () A () ()

FINISH SUFFIX (SEE NOTE 3)
COUNTERBORE DASH NUMBER (SEE TABLE II)
NO SUFFIX FOR EXTENDED REUSABILITY NUT (50 CYCLE)
SUFFIX 'E' FOR STANDARD REUSABILITY NUT (15 CYCLE)
(DEFAULT 'A' FOR TWO-LUG NUTPLATE)
DASH NO. FOR THREAD SIZE (SEE TABLE I)
BASIC PART NUMBER
BACN11G - () () () ()

© FAA-TSO AUTHORIZED PART

C	10930	JC	10/7/15
B	10047	TD	1/3/13
REV.	ECN NO.	INIT.	DATE

REPRODUCTION OF THIS DRAWING OR MANUFACTURE OF THE PROPRIETARY PARTS SHOWN HERE WITHOUT WRITTEN PERMISSION OF LI SI AEROSPACE THE MONADNOCK COMPANY IS PROHIBITED

NEXT ASSEMBLY		UNLESS OTHERWISE SPECIFIED DIMENSIONS ARE IN INCHES. TOLERANCES ARE AS FOLLOWS: DECIMALS ±.005 (C) FRACTION - ANGLES ±2'		IBM NUMBER: N/A		li si AEROSPACE THE MONADNOCK COMPANY 18728 E. GALE AVE. CITY OF INDUSTRY, CALIFORNIA	
END ITEM		MATERIAL: NOTED		PROJECT NUMBER: 0712-002		TITLE: NUT PLATE, 2 LUG, FLOATING, SELF-LOCKING, (BACN11G()A()() EQUIV.)	
THIRD ANGLE PROJECTION		HEAT TREAT: NOTED		DRAWN BY: DATE TSC 4/4/08		CAGE CODE SIZE DRAWING NUMBER: 60119 A 186502-()A()()	
		FINAL PROTECTIVE FINISH: NOTED		APPROVED BY: DATE TSC 4/4/08		RECAL NONE SALES SHEET 2 OF 2	